

S SOLID BEARING

ENDURANCE TECHNOLOGY™

Endurance Technology features are designed for maximum durability to provide extended service life.

STAINLESS STEEL BANDS

- Both interior sealing band and exterior dust band made of fatigue resistant stainless steel



STAINLESS STEEL IS DURABLE, FLEXIBLE AND CORROSION RESISTANT

- Does not stretch like bands made of rubber or polymer materials
- Stainless steel sealing bands resist blow out during pressure spikes that may occur during high velocity cushioning

RETAINED DUST BAND

- Retained dust band keeps contaminants from entering the cylinder interior, protecting components for reduced maintenance and increased uptime

POSITIVE POSITION SEALS

- Sturdy U-cup base section assures positive positioning of seal lip for better sealing and less seal wear
- Made of custom formulated polyurethane for pliable, wear resistant seal lip

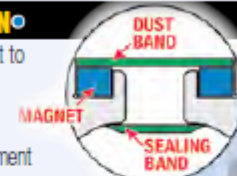
The MXP-S pneumatic rodless cylinder is exactly what you expect from the industry's number one rodless supplier. Featuring durable stainless steel bands, field replaceable engineered bearings and a large carrier mounting pattern the MXP-S is a great solution for applications that require increased Mx bending moment capacity. Built-to-order in stroke lengths up to 206 inches.

DUST WIPER

- Formed end cap and side dust wipers keep contaminants from entering the cylinder's internal area

NON-WEAR BAND RETENTION

- Magnetically retained bands are not subject to wear as are mechanically retained systems
- Immediate band engagement and release results in less drag on piston for lower breakaway force during initial carrier movement



ADJUSTABLE CUSHIONS

- Easy screw adjustment for smooth deceleration protecting actuator from high stress at end-of-stroke
- Adjustable cushions with retained stainless steel needle screw for increased safety



INTERNAL MAGNETS

- Standard feature that allows sensor installation on left, right or bottom of the extrusion

ISOLATED PISTON

- Unique design isolates the piston from the applied load, extending the service life of the piston seals



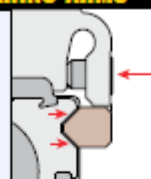
- Piston remains isolated even when the carrier is deflected under load
- Piston bracket and carrier feature single piece extrusions, reducing failure points

LARGE FLEXIBLE MOUNTING PATTERN

- Carrier gives more load stability
- Compatibility with existing BC2 applications
- More fastening options

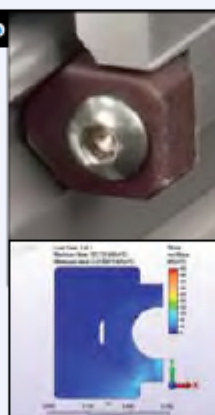
NON-BINDING BEARING ARMS

- Bearings are tensioned indirectly, providing bind free adjustment



TRAPEZOIDAL BEARINGS

- Trapezoidal design maximizes bearing surface area for less pressure on bearing surfaces; less pressure results in less wear
- Engineered bearing material has low static and dynamic friction with low wear properties for long lasting, smooth operation
- Bearings are field replaceable for extended service life



NOTE: Boxed letters indicate ordering codes

OPTIONS



- AUXILIARY CARRIER** **DW**
- 2X higher Fz (load) capacity
 - High bending moment capacity



- FLOATING MOUNT** **FL**
- Compensates for non-parallelism between MXP band cylinder and externally guided load



- TUBE CLAMPS** **TC**
- Used for intermediate support
 - Flush with bottom of actuator to retain low profile
 - Drop-in, adjustable mounting locations



- FOOT MOUNTS** **FM**
- For end mounting of MXP band cylinder
 - Use to bottom or side mount actuator



- SHOCK ABSORBERS** **AL SL AH SH**
- Allows increased operating speed and load
 - Self-compensates for load or speed changes
 - Minimizes impact load to equipment
 - Fixed or adjustable position shocks



- SINGLE-END PORTING** **S**
- Convenient single-end air connection (not available on MXP16)



- SWITCHES**
- Wide variety of sensing choices: Reed, Solid State PNP or NPN, all available normally open or normally closed
 - Flush mount, drop-in installation, anytime
 - Bright LEDs, power & signal indication
 - CE rated, RoHS compliant

- DIRECT MOUNT**
- Head bolts are tapped for direct mounting

PORTING CHOICES

- 4-ported heads are standard to allow air connections on sides, end or bottom
- Single-end porting allows convenient one end air connection
- NPT, Metric Parallel (ISO-G/BSP) & Metric Taper (Rc/BST) available on both metric and inch (US standard) mount actuators

- INCH OR METRIC MOUNTING**
- Your choice of inch (US standard) or metric fasteners for carrier and head bolt mounting