

# IT SYSTEMS

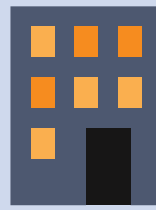
Information Technology (IT) combines all necessary technologies for information processing.

Level 4

## ENTERPRISE SCHEDULING & MANAGEMENT

Supplier Rel. Mgt., HR Mgt., Finance Mgt., Supply Chain Mgt., Customer Relationship Mgt. (CRM)

Remote Office



Database Server

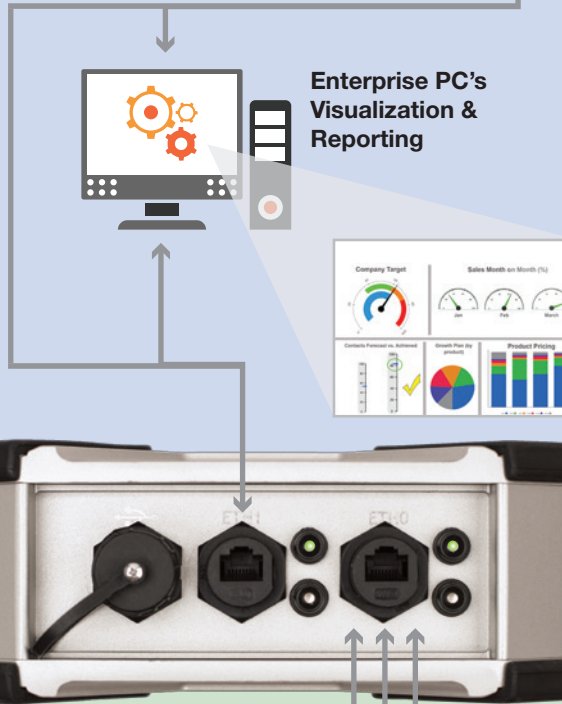


Level 3

## PRODUCTION MANAGEMENT

**PRODUCTION:**  
Resource Mgt., Process Mgt., Production Planning, Tracking & Tracing, Quality Mgt. (QA), Data Collection Perform. Analysis(KPI)

**DEVELOPMENT:**  
Computer Aided Design (CAD), CA Manufacturing, CA Process Planning, Digital Mock-up



MES

Manufacturing Flow Design  
Manufacturing Flow Planning

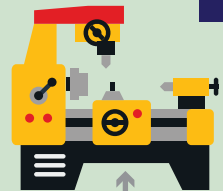
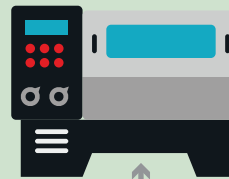
Integrated Hardened Gateway

Level 2

## CONTROLS & AUTOMATION

Logic/Batch Control, Recipe Management, Parameter Management

PLC Machines



MES

Level 1

## INTELLIGENT DEVICES

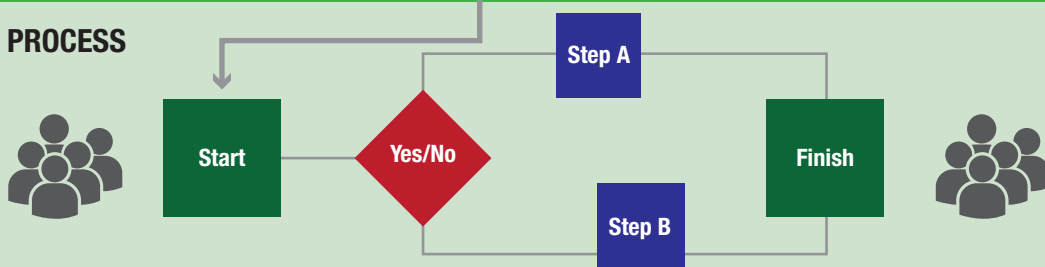
Sensors, Vision systems, RFID readers, Flow, Printers, Scanners

These devices can interact directly with the Data Commander



Level 0

## PHYSICAL PRODUCTION PROCESS



# OT SYSTEMS

Operation Technology (OT) comprises the devices, sensors and software necessary to control and monitor the plant and equipment.