

BC3 BAND CYLINDER

ENDURANCE TECHNOLOGY™

Endurance Technology features are designed for maximum durability to provide extended service life.

The BC3 is the most capable pneumatic rodless cylinder in the industry today. Featuring durable stainless steel bands, a reliable recirculating ball bearing design and smooth, low breakaway pressure the BC3 is a great solution for applications with high load and bending moment requirements. Built-to-order in stroke lengths up to 205 inches.

FORMED END CAP WIPER SEAL

- Keeps contaminants from entering the sealing area
- Protects internal components
- Reduces maintenance while increasing productivity

SEALED BALL BEARING SYSTEM

- All bearing components covered by seal strip
- Bearing components are sealed and lubricated at the factory
- Assures maximum resistance to contamination

STAINLESS STEEL SEALING BAND SYSTEM

- Fatigue resistant stainless steel bands are specifically made to provide longer life and will not elongate, like elastomers
- Outer band keeps out contaminants for extended performance
- Inner band provides a smooth surface for less seal wear

FORMED STEEL PISTON BRACKET

- Provides maximum strength at major stress points
- Heat treated carbon steel withstands the toughest dynamic forces
- Strongest bracket design in the industry assures long life with less maintenance



LOAD-BEARING CARRIER DESIGN

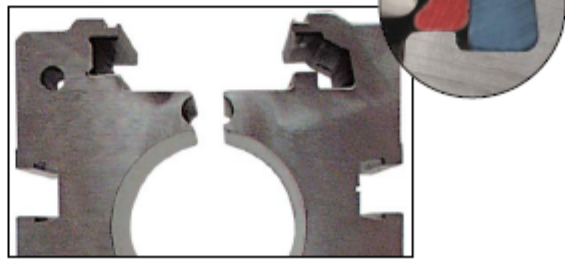
- Load and piston are independent - piston floats, resulting in less friction and longer seal life
- Recirculating ball bearing system guides and supports load for consistent long term performance
- Constant level of friction is maintained even when load orientation changes

ADJUSTABLE CUSHIONS

- Adjustable cushions are standard, not optional
- Easy screw adjustment for end-of-stroke deceleration
- Protects actuator and load from damage

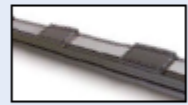
PATENTED WEDGE BEARING SYSTEM

- Bearing surfaces adjusted at the factory for optimum pre-load
- Bearing surfaces adjusted by and supported by a steel wedge assuring long term stability



TOLOMATIC... THE RODLESS CYLINDER LEADER

OPTIONS



- ### AUXILIARY CARRIER
- Substantially higher load capacity
 - Substantially higher bending moment capacity



- ### DUAL 180° CARRIER
- Substantially higher load capacity
 - Substantially higher bending moment capacity



- ### AUXILIARY DUAL 180°
- Highest load capacity
 - Highest bending moment capacity



- ### TUBE SUPPORT MOUNTS
- Used for intermediate support



- ### FOOT MOUNTS
- For end mounting of band cylinder



- ### SHOCK ABSORBERS
- Smooth deceleration, higher productivity
 - Allows increased operating speed
 - Self-compensates for load or speed changes
 - Minimizes impact load to equipment
 - Adjustable position shocks available



- ### SWITCHES
- Available in Reed, Hall-effect and Triac
 - 15ft. cable with flying leads; available with quick-disconnect couplers